

The Future of the Community: A personal Perspective

UC Berkeley, CASA

April 20, 2018



Joseph Martinez, Architect

Martinez + Cutri Corporation

Over Arching Premise:

You are the Catalyst for Change



The Future of the Community: A personal Perspective

Joseph Martinez, Architect Martinez + Cutri Corporation

Over Arching Premise:

You are the Catalyst for Change, what you need to Know !



The Future of the Community: A personal Perspective

Joseph Martinez, Architect Martinez + Cutri Corporation

Dynamics of the 21st Century:

**Big DATA and Information, Global Community,
Multi-culturalism, Identity**



The Future of the Community: A personal Perspective

Joseph Martinez, Architect Martinez + Cutri Corporation

Identity and Multi-culturalism:

A Career in the profession of Architecture



The Future of the Community: A personal Perspective

Joseph Martinez, Architect Martinez + Cutri Corporation

Identity and Multi-culturalism:

Design Architect Academics Related Fields ???



The Future of the Community: A personal Perspective

Joseph Martinez, Architect Martinez + Cutri Corporation

Over Arching Premise:

Entrepreneurial, Multi-dimensional.... Tlaloc



The Future of the Community: A personal Perspective

Joseph Martinez, Architect Martinez + Cutri Corporation

Personal Parameters: Defining Self

Chicanismo

Understanding the History the Americas: The Last 10,000 Years!

Culture

Ceremony and Rituals

Architecture

Art

The Context and Town Planning

Ancient Forms and Symbolism

Astronomy

Mathematics: Base 20 and Zero

Pattern and Color

Materials

Time and 2012 : Cyclical

Man reflection of God: Man integral to Nature

Hierarchies and Contemporary Iconography: The Low Rider Car

Intellectual Discourse: Chicano Experience

160000. Catalyst for Upward Mobility

- Wealth
- Education
- Civic Engagement
- Re-development

8000. Depiction of Events Transcribed into Stone

- Oral Storytelling Tradition
- Synthesis of Construction
- Permanence becomes Timeless

400. Inter-generational Transmission of Culture:

- Rituals, Customs and Ceremonies
- Evolution of Civilization

20. Place in the Universe:

- Randomness becomes Precision
- Ecology and Sustainability
- Knowledge is Power

1. Singularity



Personal Parameters: Defining Self

Chicanismo



160000. Catalyst for Upward Mobility

- Role Model
- Civic Engagement
- Self Determination

8000. Depiction of Events Transcribed into Stone

- Networking
- Entrepreneur
- Permanence becomes Timeless

400. Inter-generational Transmission of Culture:

- Mecha, Bahia del Sur, Mariachi Foundation
- Ancestry
- Higher Education

20. Place in the Universe:

- Family
- Community
- Knowledge is Power

1. Singularity

ALL RIGHTS RESERVED

The Future of the Community: A personal Perspective

Joseph Martinez, Architect Martinez + Cutri Corporation

Personal Parameters: Who are You?



The Future of the Community: A personal Perspective

Joseph Martinez, Architect Martinez + Cutri Corporation

1 Who were the first people who lived in the Southwest?

We call them Paleo-Indians and they appeared toward the end of the last Ice Age – at least twelve thousand years ago. They were the first Americans. The word *paleo* (PAY-leeo) means ancient or old.



2 Paleo-Indians were old folks from India?

No, they weren't old; they just lived long ago, in olden times. We call them Indians because they are the ancestors of today's Native Americans. But they didn't come from India. When Christopher Columbus sailed to America from Spain in 1492, he thought he'd arrived in India and called the natives "Indians." Trouble is, India is on the other side of the world. Columbus didn't exactly know where he was!

During the last Ice Age, people from Asia migrated to North America over a thousand-mile-wide land bridge. These nomads explored many areas of what is now the United States, Mexico, and South America.

3 Then where did Paleo-Indians come from?

Siberia. More than ten thousand years ago, there were long periods when Siberia and Alaska were connected by a wide bridge of land over which animals and people could walk. Later, when warmer weather caused glaciers to melt, the sea level rose and this land bridge was flooded. We call the narrow strip of sea that separates Alaska from Siberia today the Bering Strait.

4 How could anyone walk all the way from Asia to Arizona?

Paleo-Indians were nomads, and they walked everywhere. In those days, the only way to travel was by foot. If you walked fifteen miles a day every day for six months, you'd cover almost three thousand miles (which would be like walking from the coast of California to the coast of Virginia). But the nomads were in no hurry. Over many centuries, they followed herds of big animals, such as mammoths, southward along the edge of glaciers or down the coast. When they wandered into what we now call the Southwest, the climate was cooler and wetter. You would have seen large spruce and fir forests, sparkling clear lakes, and lush grasslands.

The Future of the Community: A personal Perspective

Joseph Martinez, Architect Martinez + Cutri Corporation



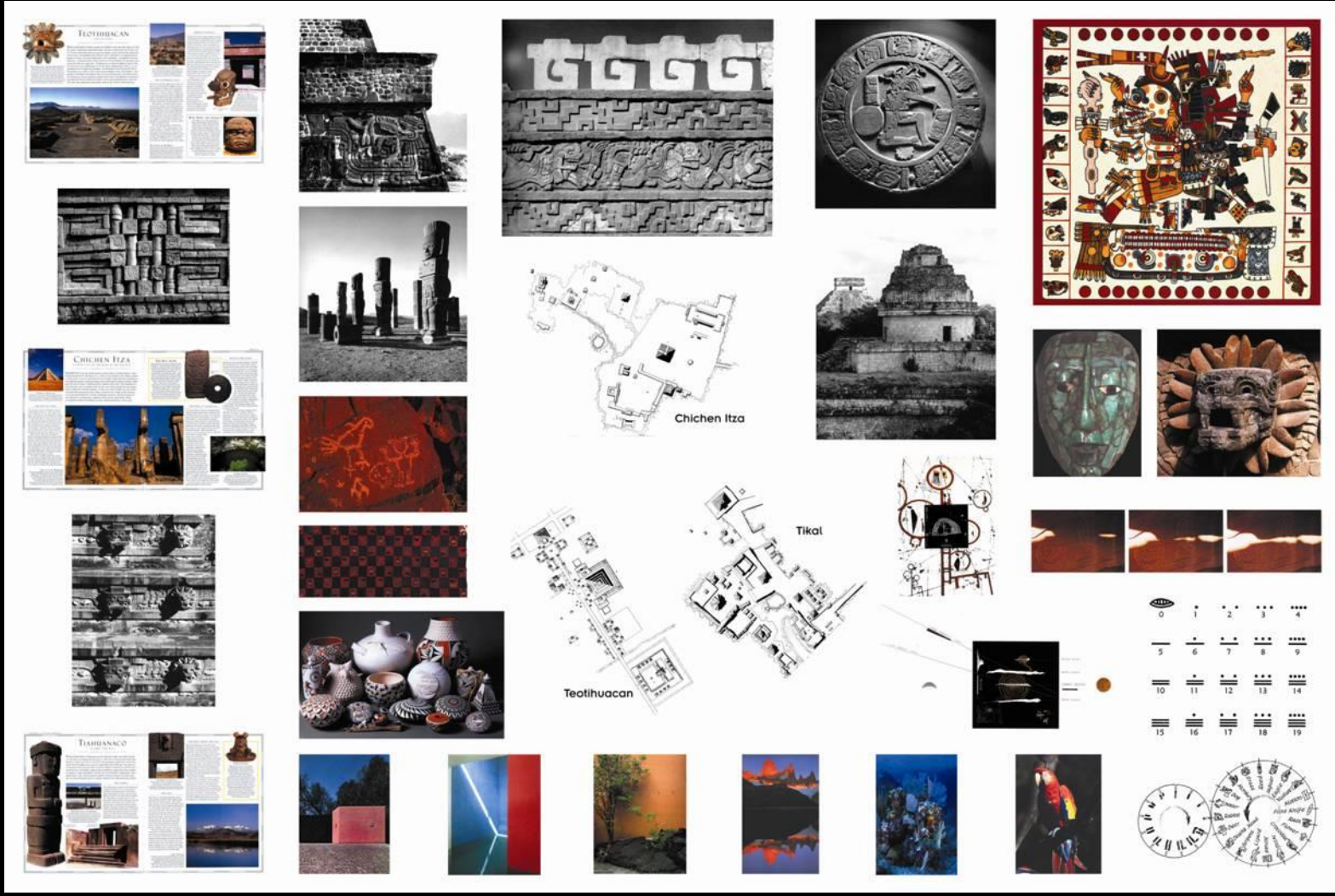
The Future of the Community: A personal Perspective

Joseph Martinez, Architect Martinez + Cutri Corporation



The Future of the Community: A personal Perspective

Joseph Martinez, Architect Martinez + Cutri Corporation



The Future of the Community: A personal Perspective

Joseph Martinez, Architect Martinez + Cutri Corporation

CHICHEN ITZA

SACRED CITY OF THE MAYA & THE TOLEDES

GATEWAY TO THE MEXICAN CIVILIZATION



CHICHEN ITZA was one of the greatest ruined cities in Central America. After being abandoned by the Maya in A.D. 900, it was rebuilt by the Toledos about a century later. A sacred road leads from the Temple of Quetzalcoatl to Kukulcan, the planned segment a mirror-looking sacred road used for human sacrifice which gives the site its name. Chichen means "mouth of the well." The remains of a road link this spot to another well. To the west of the temple the largest known ballcourt in Central America. To the east of the Temple was one of the most splendid monuments of the Yucatan civilization: the Temple of the Warriors. A low pyramid flanked by columns depicting warriors, and the location of the chalcamed, an impressive sculpture where priests exposed the chests of sacrificed victims and offered by their still beating hearts to the gods.

THE MAYAN CIVILIZATION

No one knows why the Old Maya Empire, which began around A.D. 200, came to an end, or why others in its backyard like Copan, Tikal, and Palenque were abandoned around A.D. 900. We know that some time after A.D. 900 the Maya began to build new cities. The Chichen Itza in the Yucatan peninsula. The city was built by the Itza, a Maya people called the "New Empire," when the civilization was moving to the Yucatan. In fact, these Chichens had stood on the site, the earliest in A.D. 452. These Chichens have been preserved to explain the great abandonment of Maya cities. At first, it was believed they were driven out by enemies, until it became clearer that they had none - they were supreme within their own realm. Earthquake and flood were also ruled out, since there were no signs of destruction. But the real explanation of these factors varies from place to place.

TEMPLES OF THE WARRIORS

The striking figure in the center of the temple is the god Quetzalcoatl, the feathered serpent god. In 1939, the discovery of the Chichen Itza in 1939. One of the most important archaeological sites in the Yucatan. It is a masterpiece of Maya architecture, and is one of the best preserved in the Americas. It is a masterpiece of Maya architecture, and is one of the best preserved in the Americas.



THE BALL GAME

The Mesoamerican game played by the ball game - one month or a year, that is an important element of the Mesoamerican culture. It is a game that is played in a ball court. The ball court was originally made of stone. Later, it was made of wood. The ball court was used for a variety of purposes, including religious and political. The ball court was used for a variety of purposes, including religious and political.

MAYAN STAR WARS

Perhaps the most important building in Chichen Itza was the Great Observatory, which was dedicated to the same name. The Maya attached enormous importance to astronomy - an ancient people did - for a countless their significance and that had significant. The Maya attached enormous importance to astronomy - an ancient people did - for a countless their significance and that had significant.

THE WELL OF SACRIFICE

In a book written in 1940, the Spanish bishop Diego de Landa described the "sacred well" of Chichen Itza, where victims were hurled to appease the gods during public sacrifices. In the 1800s, a young American, Edward Thompson, discovered the well. He was the first to describe the well as a ceremonial well, and he was the first to describe the well as a ceremonial well.

THE SACRED CAVERN

The discovery of the Sacred Cavern in Chichen Itza was a major archaeological find. It was a cavern that was used for religious purposes. The cavern was used for religious purposes. The cavern was used for religious purposes.

THE SACRED CAVERN

The discovery of the Sacred Cavern in Chichen Itza was a major archaeological find. It was a cavern that was used for religious purposes. The cavern was used for religious purposes. The cavern was used for religious purposes.

THE SACRED CAVERN

The discovery of the Sacred Cavern in Chichen Itza was a major archaeological find. It was a cavern that was used for religious purposes. The cavern was used for religious purposes. The cavern was used for religious purposes.

THE SACRED CAVERN

The discovery of the Sacred Cavern in Chichen Itza was a major archaeological find. It was a cavern that was used for religious purposes. The cavern was used for religious purposes. The cavern was used for religious purposes.

THE SACRED CAVERN

The discovery of the Sacred Cavern in Chichen Itza was a major archaeological find. It was a cavern that was used for religious purposes. The cavern was used for religious purposes. The cavern was used for religious purposes.

THE SACRED CAVERN

The discovery of the Sacred Cavern in Chichen Itza was a major archaeological find. It was a cavern that was used for religious purposes. The cavern was used for religious purposes. The cavern was used for religious purposes.

THE SACRED CAVERN

The discovery of the Sacred Cavern in Chichen Itza was a major archaeological find. It was a cavern that was used for religious purposes. The cavern was used for religious purposes. The cavern was used for religious purposes.

THE SACRED CAVERN

The discovery of the Sacred Cavern in Chichen Itza was a major archaeological find. It was a cavern that was used for religious purposes. The cavern was used for religious purposes. The cavern was used for religious purposes.

THE SACRED CAVERN

The discovery of the Sacred Cavern in Chichen Itza was a major archaeological find. It was a cavern that was used for religious purposes. The cavern was used for religious purposes. The cavern was used for religious purposes.

CHICO CANYON

HOME OF THE "ANCIENT ONES"

GATEWAY TO THE MEXICAN CIVILIZATION

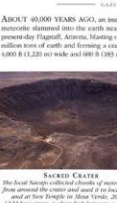


CHICO CANYON in New Mexico was the home of an indigenous people called the Anasazi - "Ancient Ones" - who inhabited the area from a few centuries B.C. until the 13th century A.D. The Great Houses of the canyon, which resembled modern apartment blocks, were built between A.D. 900 and 1150. Until A.D. 1080, when the first remains were discovered under the overhang of Mesa Verde Canyon, Colorado, no one had heard of the Anasazi people, or suspected their existence. Anasazi pottery and basketry were found in the canyon, and it was suggested that the Anasazi were highly advanced - although some areas revealed they were a Stone Age culture. The remains of Pueblo Bonito in Chaco Canyon, a settlement covering over 2 acres (1.3 hectares) confirmed that these people, ancestors of the Hopi and Zuni, had occupied the area for over a thousand years. One of the most puzzling features of the Chaco area are the "roads" - a word which like a network of roads, 90 to 100 miles, connecting for several hundred miles around the canyon. Many of these can now only be seen from the air. They run in straight lines, then suddenly change direction. These might have been trade routes used by the inhabitants of Chaco Canyon, but the carefully engineered network, which includes extensive kivas, has led to the theory of the canyon they often turn into flights of empty steps, too steep for everyday use. Legend claims that they were "built" for the "Ancient Ones." It is possible that they served some ceremonial or religious purpose. The explanation of Chaco society when the Anasazi abandoned suggests that Chaco Canyon may have been something greater than it is today. The mystery of this ancient people, and why they vanished, has yet to be explained.

METEOR CRATER

SIGN OF THE FLAMING SERPENT GOD

GATEWAY TO THE MEXICAN CIVILIZATION



ABOUT 60,000 YEARS AGO, an immense meteorite slammed into the earth near present-day Flagstaff, Arizona, leaving a 4,000-foot crater of rock and forming a crater 1,000 (1,120) wide and 560 (1,805) deep. - deep enough to hold a 5-story building. The crater is surrounded by a ring of 20-foot boulders - a kind of wall - rising up to 300 (1,000) ft. The boulders down to the bottom are 3 to 10 (10) ft. No meteorite iron has been found below the bottom of the pit, and for many years scientists suspected that the whole crater might have been filled with an immense explosion of volcanic steam. Yet the fact that the crater is surrounded by a ring of 20-foot boulders, with chunks of iron, with a pillar of high light shining from the crater, has convinced them otherwise. On August 28, 1908, the Navajo people regarded Meteor Crater as a sacred site, for according to their legend, the crater was made by a flaming serpent god who possessed overcast and hurled a thunderbolt into the earth as a sign that he had been there.

SUNSET CRATER

This site in southern Arizona, an extinct volcano in the San Francisco range, is regarded by the Hopi people as a sacred monument. A Hopi legend tells of a sign that the people were prepared to destroy them. The only volcano in the area that is high enough to be in the legend is Sunset Crater. The Hopi people, the first to see the land now fertile, for the crater of a hot volcano was the sign that he had been there.

THE STRANGE LINES OF THE PERUVIAN DESERT

THESE STRANGE LINES in the Peruvian desert have been called the greatest mystery in the world. Only recently discovered, when viewed from the air, hundreds of huge straight lines in the sand and straight lines in the sand.

MAZZA LINES

NYSTLE OF THE ANDES

THESE STRANGE LINES in the Peruvian desert have been called the greatest mystery in the world. Only recently discovered, when viewed from the air, hundreds of huge straight lines in the sand and straight lines in the sand.

THE SACRED VALLEY

THE SACRED VALLEY in Peru is one of the most beautiful and fertile valleys in the world. It is a valley that is surrounded by high mountains and is a valley that is surrounded by high mountains.

THE SACRED VALLEY

THE SACRED VALLEY in Peru is one of the most beautiful and fertile valleys in the world. It is a valley that is surrounded by high mountains and is a valley that is surrounded by high mountains.

THE SACRED VALLEY

THE SACRED VALLEY in Peru is one of the most beautiful and fertile valleys in the world. It is a valley that is surrounded by high mountains and is a valley that is surrounded by high mountains.

THE SACRED VALLEY

THE SACRED VALLEY in Peru is one of the most beautiful and fertile valleys in the world. It is a valley that is surrounded by high mountains and is a valley that is surrounded by high mountains.

THE SACRED VALLEY

THE SACRED VALLEY in Peru is one of the most beautiful and fertile valleys in the world. It is a valley that is surrounded by high mountains and is a valley that is surrounded by high mountains.

THE SACRED VALLEY

THE SACRED VALLEY in Peru is one of the most beautiful and fertile valleys in the world. It is a valley that is surrounded by high mountains and is a valley that is surrounded by high mountains.

TEOTIHUACAN

CITY OF GODS

GATEWAY TO THE MEXICAN CIVILIZATION



WHEN HERNANDO CORTES LANDED IN MEXICO with only 500 soldiers in 1519, the Aztecs, under their king Montezuma, had tens of thousands of warriors. Yet by 1521 the Spaniards had destroyed his empire. Cortes entered the capital city of the Aztecs, Tenochtitlan (now Mexico City), and found it as sophisticated as Madrid or Venice. He visited Teotihuacan, who would like to be surrounded by his own followers - Teotihuacan. Driven north out of Tenochtitlan, the Spaniards came across the ruins of a great city - Teotihuacan, an ancient Aztec capital of the Teotihuacan and a pilgrimage site for the Aztecs, dating back to 200 B.C. It was dominated by two huge step pyramids - the Pyramids of the Sun and the Moon. The former was similar in size to the Great Pyramid of Giza. The Great Pyramid of Giza, a vast pyramid of stone and mud, was the administrative and ritual center of Teotihuacan. The latter was the most important ceremonial center in the whole of Mesoamerica.

THE SACRED CAVERN

The discovery of the Sacred Cavern in Chichen Itza was a major archaeological find. It was a cavern that was used for religious purposes. The cavern was used for religious purposes. The cavern was used for religious purposes.

THE SACRED CAVERN

The discovery of the Sacred Cavern in Chichen Itza was a major archaeological find. It was a cavern that was used for religious purposes. The cavern was used for religious purposes. The cavern was used for religious purposes.

THE SACRED CAVERN

The discovery of the Sacred Cavern in Chichen Itza was a major archaeological find. It was a cavern that was used for religious purposes. The cavern was used for religious purposes. The cavern was used for religious purposes.

THE SACRED CAVERN

The discovery of the Sacred Cavern in Chichen Itza was a major archaeological find. It was a cavern that was used for religious purposes. The cavern was used for religious purposes. The cavern was used for religious purposes.

THE SACRED CAVERN

The discovery of the Sacred Cavern in Chichen Itza was a major archaeological find. It was a cavern that was used for religious purposes. The cavern was used for religious purposes. The cavern was used for religious purposes.

THE SACRED CAVERN

The discovery of the Sacred Cavern in Chichen Itza was a major archaeological find. It was a cavern that was used for religious purposes. The cavern was used for religious purposes. The cavern was used for religious purposes.

THE SACRED CAVERN

The discovery of the Sacred Cavern in Chichen Itza was a major archaeological find. It was a cavern that was used for religious purposes. The cavern was used for religious purposes. The cavern was used for religious purposes.

THE SACRED CAVERN

The discovery of the Sacred Cavern in Chichen Itza was a major archaeological find. It was a cavern that was used for religious purposes. The cavern was used for religious purposes. The cavern was used for religious purposes.

THE SACRED CAVERN

The discovery of the Sacred Cavern in Chichen Itza was a major archaeological find. It was a cavern that was used for religious purposes. The cavern was used for religious purposes. The cavern was used for religious purposes.

The Future of the Community: A personal Respective

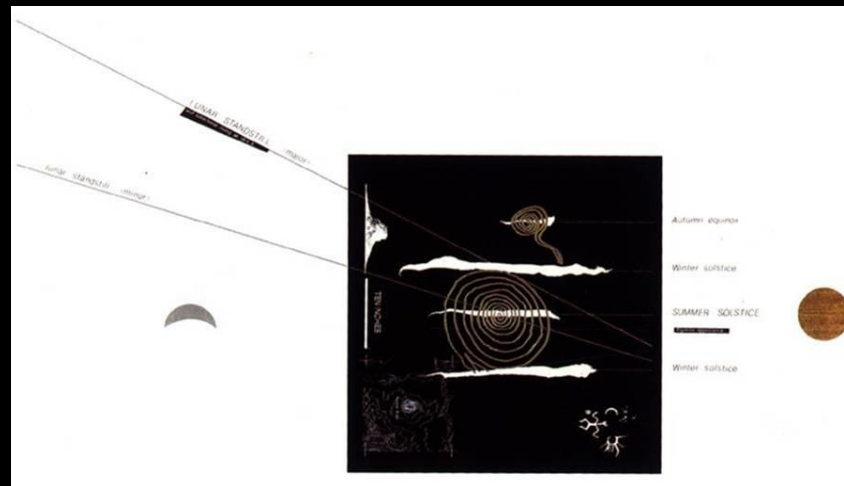
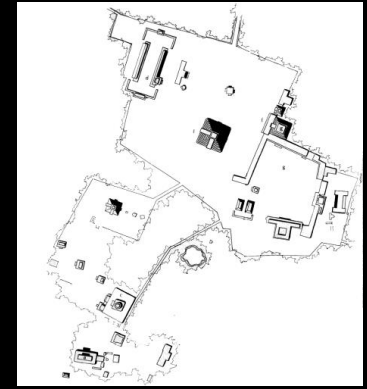
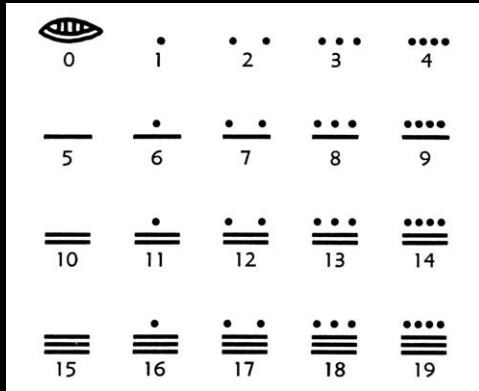
Joseph Martinez, Architect

Martinez + Cutri Corporation



The Future of the Community: A personal Perspective

Joseph Martinez, Architect Martinez + Cutri Corporation



The Future of the Community: A personal Perspective

Joseph Martinez, Architect Martinez + Cutri Corporation



The Future of the Community: A personal Perspective

Joseph Martinez, Architect Martinez + Cutri Corporation



The Future of the Community: A personal Perspective

Joseph Martinez, Architect Martinez + Cutri Corporation



The Future of the Community: A personal Perspective

Joseph Martinez, Architect Martinez + Cutri Corporation



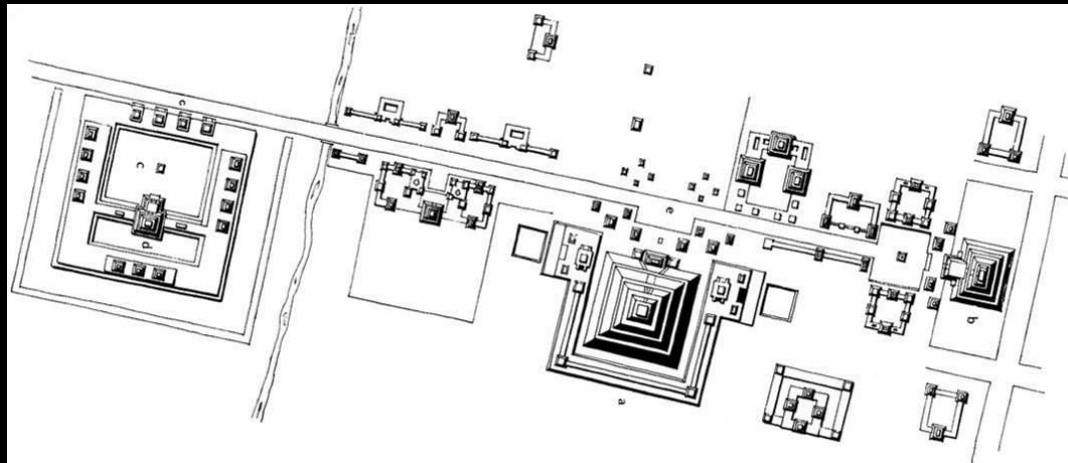
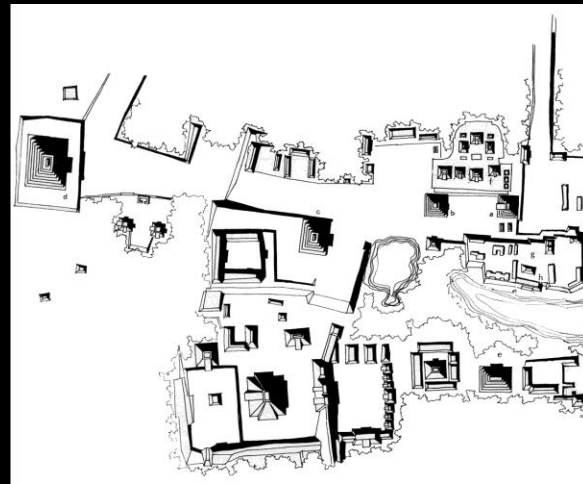
The Future of the Community: A personal Perspective

Joseph Martinez, Architect Martinez + Cutri Corporation



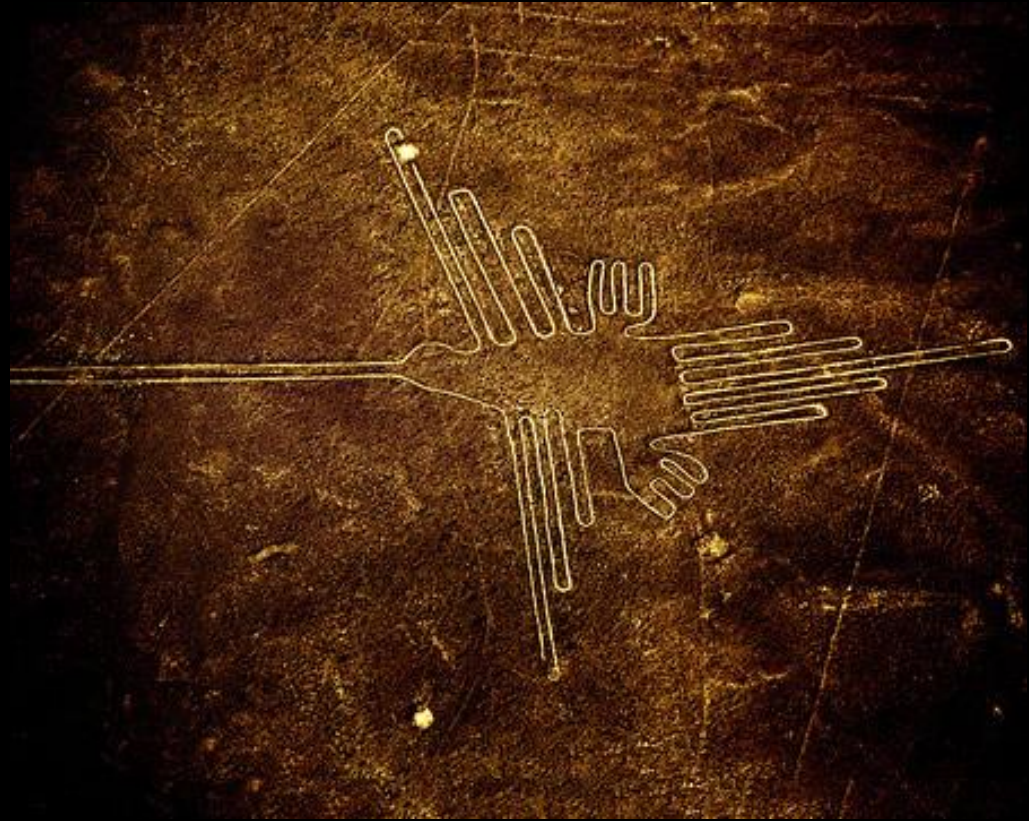
The Future of the Community: A personal Perspective

Joseph Martinez, Architect Martinez + Cutri Corporation



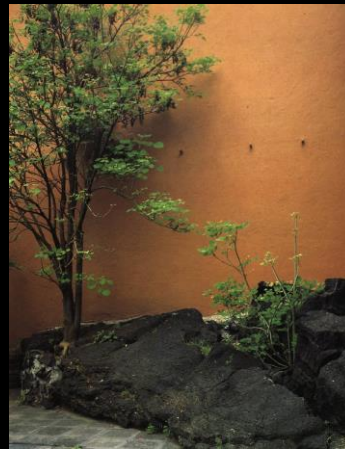
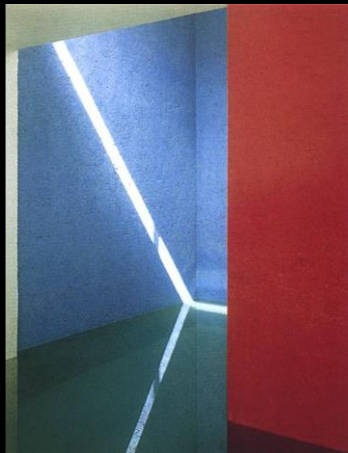
The Future of the Community: A personal Perspective

Joseph Martinez, Architect Martinez + Cutri Corporation



The Future of the Community: A personal Perspective

Joseph Martinez, Architect Martinez + Cutri Corporation



The Future of the Community: A personal Perspective

Joseph Martinez, Architect Martinez + Cutri Corporation



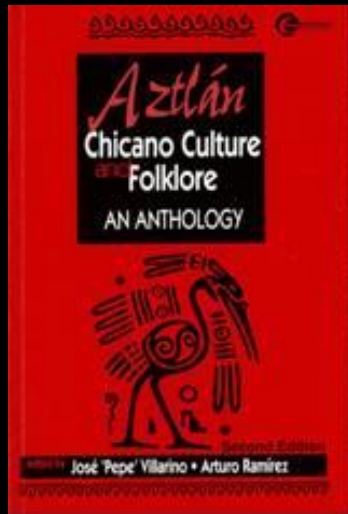
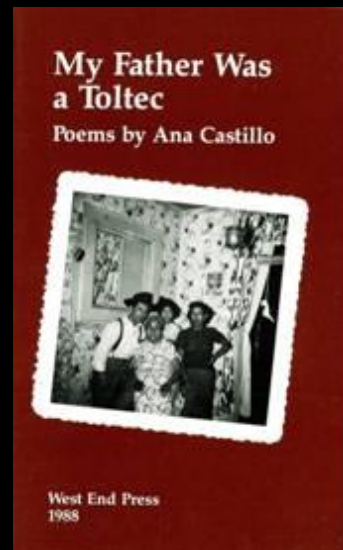
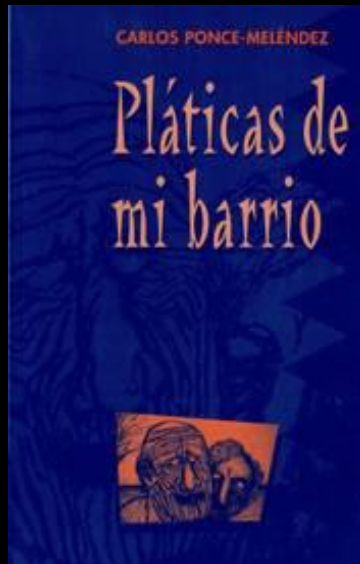
The Future of the Community: A personal Perspective

Joseph Martinez, Architect Martinez + Cutri Corporation



The Future of the Community: A personal Perspective

Joseph Martinez, Architect Martinez + Cutri Corporation



The Future of the Community: A personal Perspective
Joseph Martinez, Architect Martinez + Cutri Corporation

Personal Parameters: Where is the Chicano Architecture?



The Future of the Community: A personal Perspective
Joseph Martinez, Architect Martinez + Cutri Corporation



The Future of the Community: A personal Perspective

Joseph Martinez, Architect Martinez + Cutri Corporation



The Future of the Community: A personal Perspective

Joseph Martinez, Architect Martinez + Cutri Corporation



The Future of the Community: A personal Perspective

Joseph Martinez, Architect Martinez + Cutri Corporation



The Future of the Community: A personal Perspective

Joseph Martinez, Architect Martinez + Cutri Corporation



The Future of the Community: A personal Perspective

Joseph Martinez, Architect Martinez + Cutri Corporation



The Future of the Community: A personal Perspective

Joseph Martinez, Architect Martinez + Cutri Corporation



The Future of the Community: A personal Perspective

Joseph Martinez, Architect Martinez + Cutri Corporation



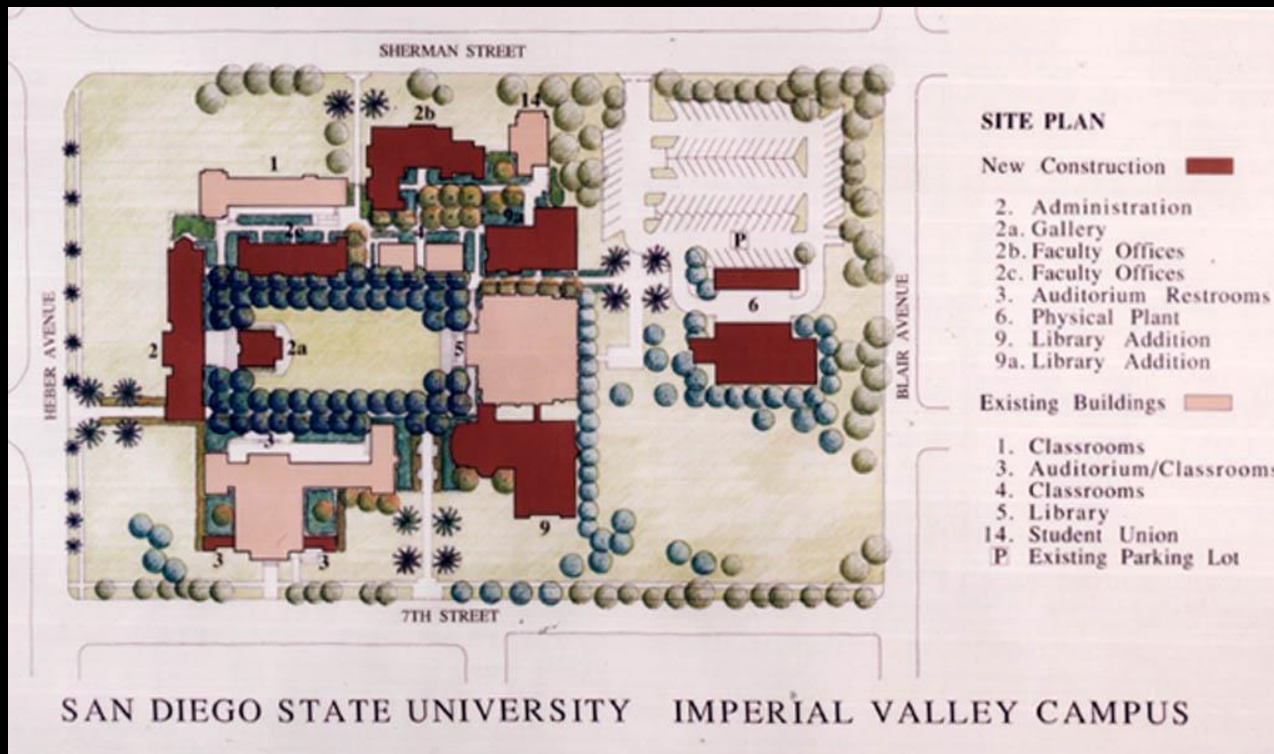
The Future of the Community: A personal Perspective

Joseph Martinez, Architect Martinez + Cutri Corporation



The Future of the Community: A personal Perspective

Joseph Martinez, Architect Martinez + Cutri Corporation



The Future of the Community: A personal Perspective

Joseph Martinez, Architect Martinez + Cutri Corporation



The Future of the Community: A personal Perspective

Joseph Martinez, Architect Martinez + Cutri Corporation



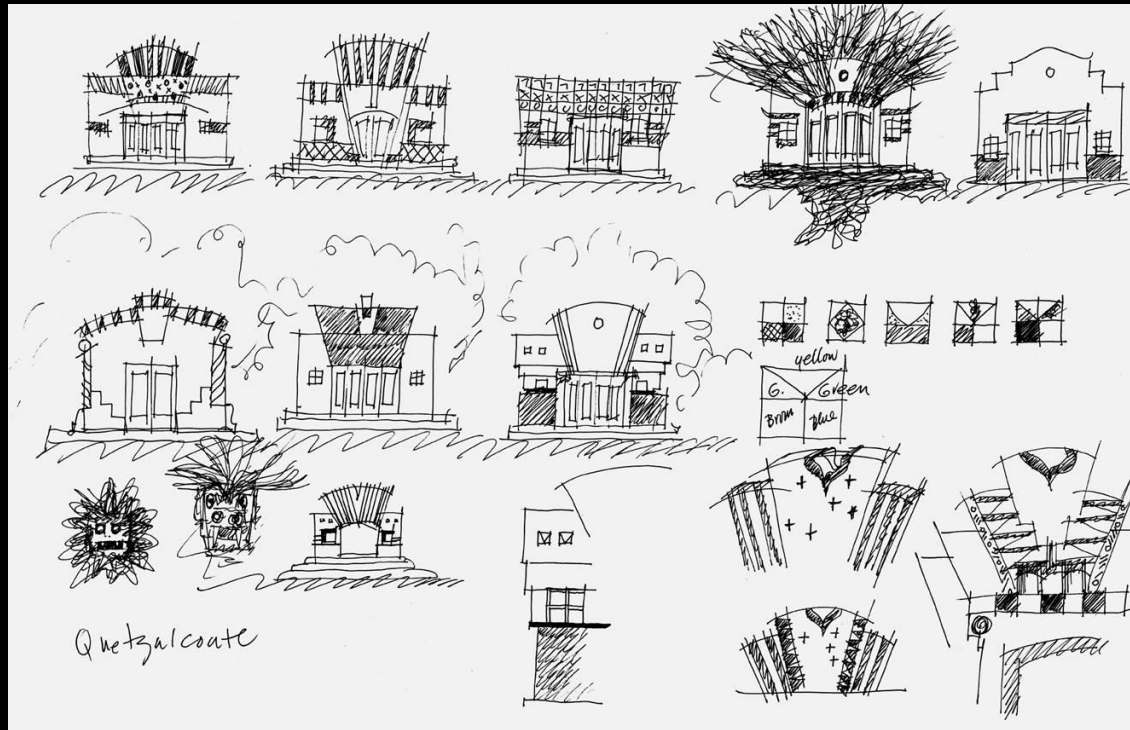
The Future of the Community: A personal Perspective

Joseph Martinez, Architect Martinez + Cutri Corporation



The Future of the Community: A personal Perspective

Joseph Martinez, Architect Martinez + Cutri Corporation



The Future of the Community: A personal Perspective

Joseph Martinez, Architect Martinez + Cutri Corporation



The Future of the Community: A personal Perspective

Joseph Martinez, Architect Martinez + Cutri Corporation



The Future of the Community: A personal Perspective

Joseph Martinez, Architect Martinez + Cutri Corporation



The Future of the Community: A personal Perspective

Joseph Martinez, Architect Martinez + Cutri Corporation



The Future of the Community: A personal Perspective

Joseph Martinez, Architect Martinez + Cutri Corporation



The Future of the Community: A personal Perspective

Joseph Martinez, Architect Martinez + Cutri Corporation



The Future of the Community: A personal Perspective

Joseph Martinez, Architect Martinez + Cutri Corporation



The Future of the Community: A personal Perspective

Joseph Martinez, Architect Martinez + Cutri Corporation



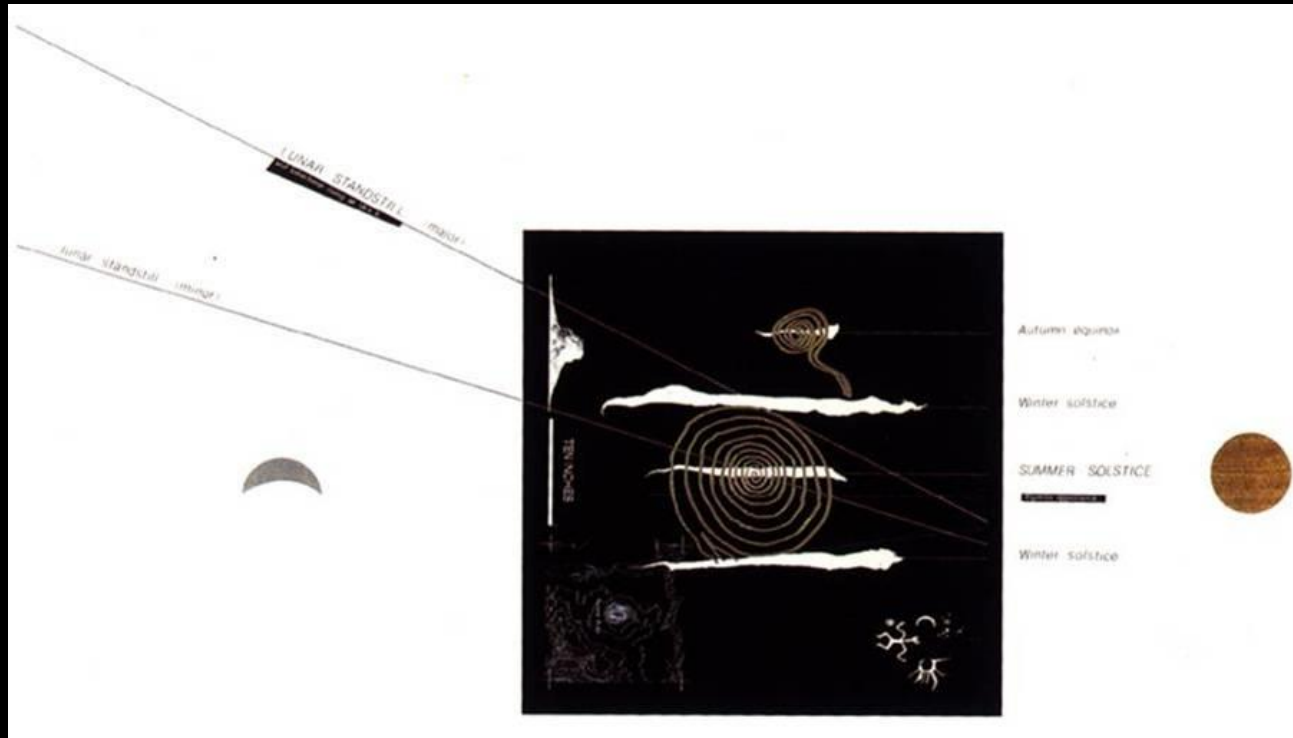
The Future of the Community: A personal Perspective

Joseph Martinez, Architect Martinez + Cutri Corporation



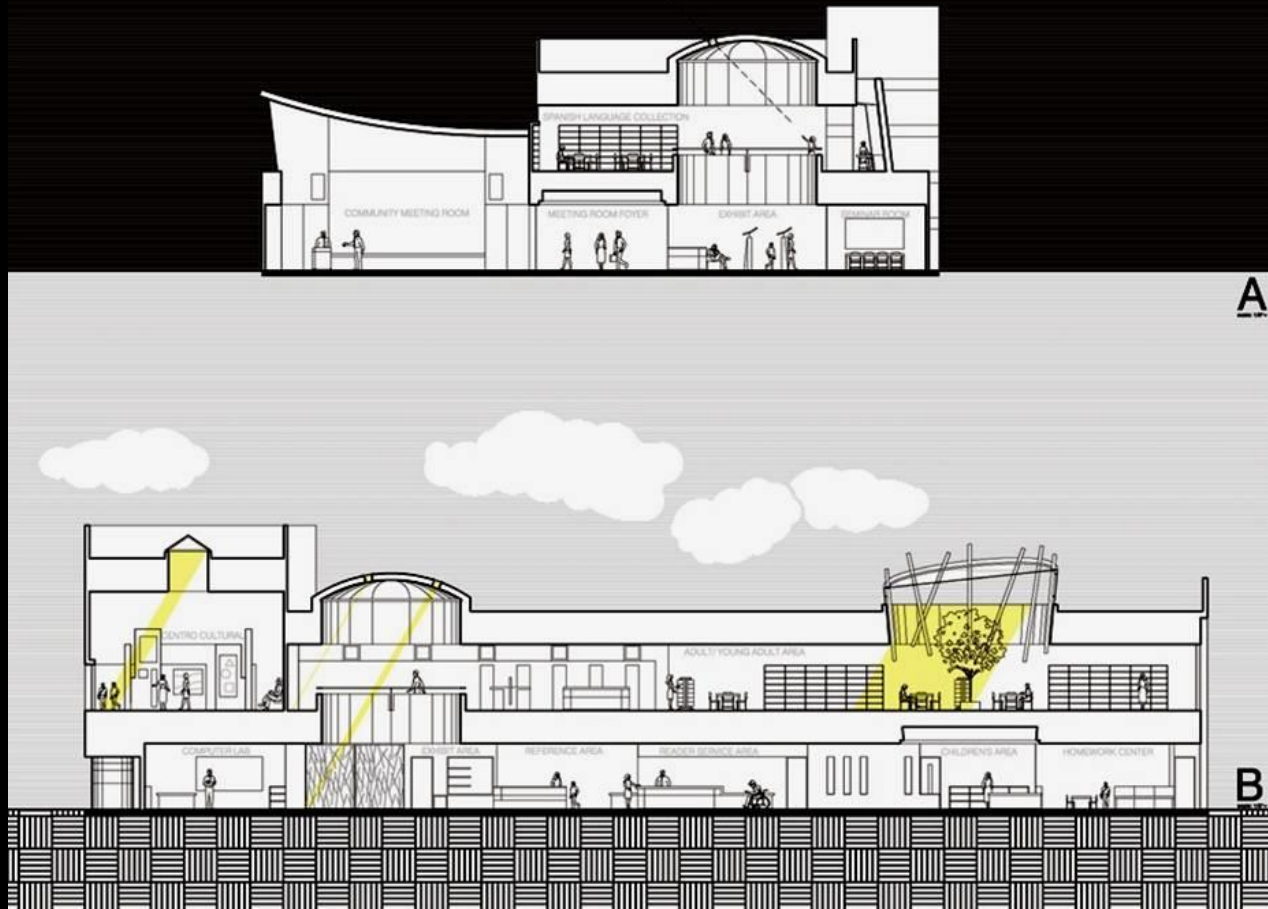
The Future of the Community: A personal Perspective

Joseph Martinez, Architect Martinez + Cutri Corporation



The Future of the Community: A personal Perspective

Joseph Martinez, Architect Martinez + Cutri Corporation



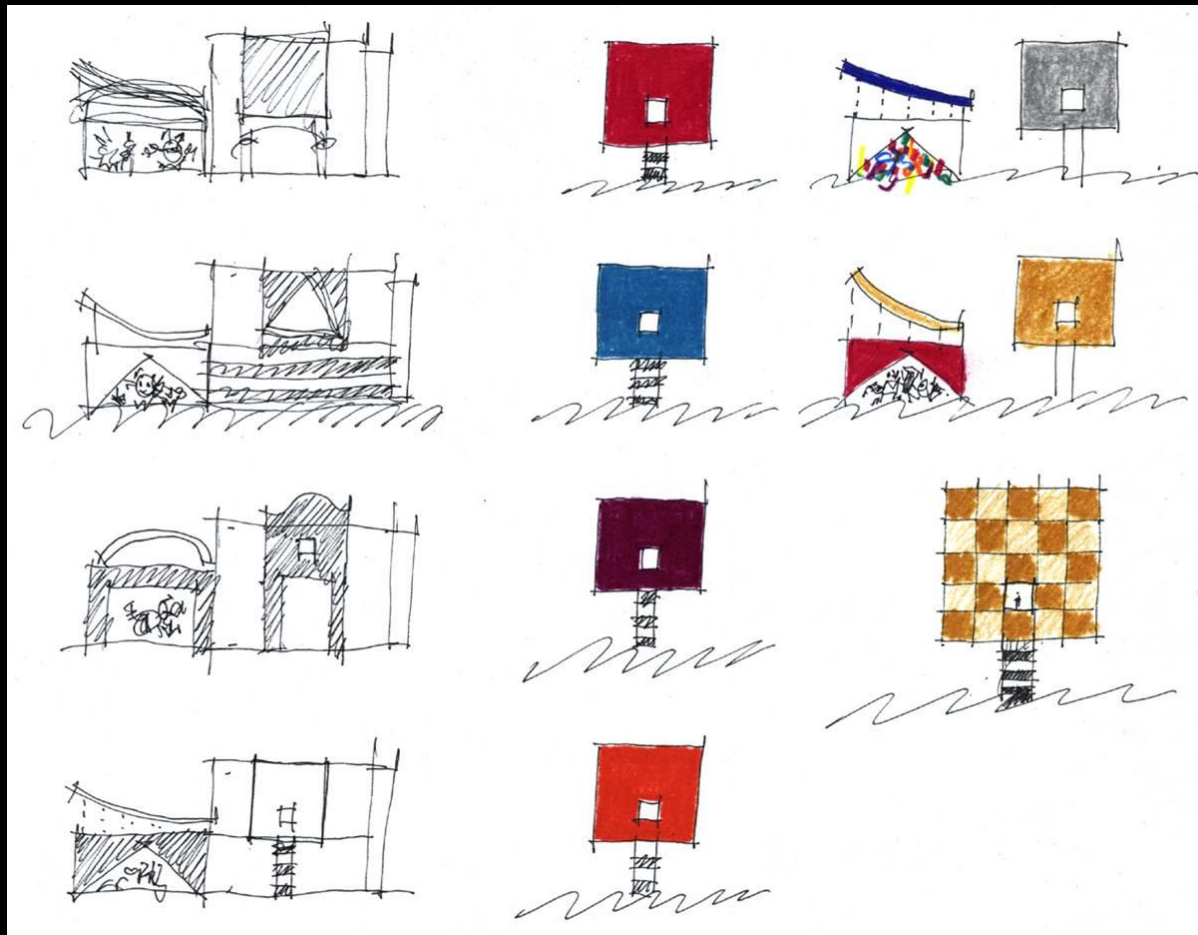
The Future of the Community: A personal Perspective

Joseph Martinez, Architect Martinez + Cutri Corporation



The Future of the Community: A personal Perspective

Joseph Martinez, Architect Martinez + Cutri Corporation



The Future of the Community: A personal Perspective

Joseph Martinez, Architect Martinez + Cutri Corporation



The Future of the Community: A personal Perspective

Joseph Martinez, Architect Martinez + Cutri Corporation



The Future of the Community: A personal Perspective

Joseph Martinez, Architect Martinez + Cutri Corporation



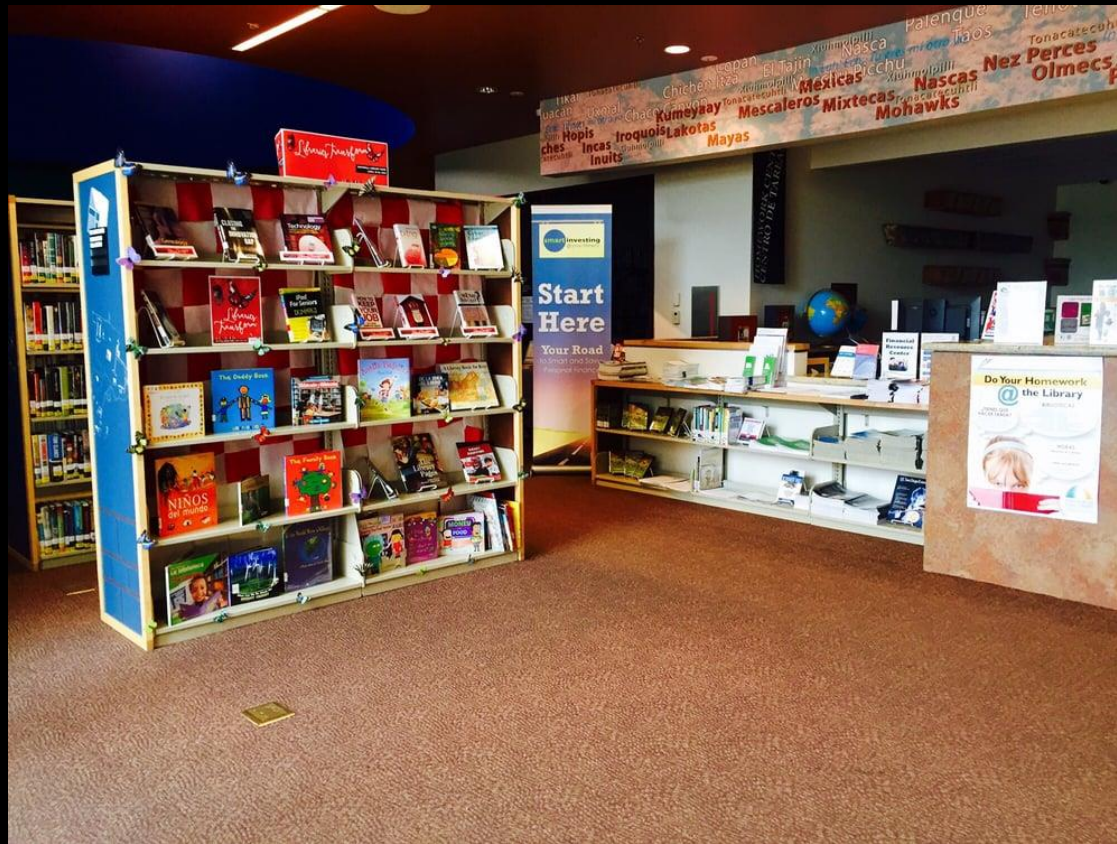
The Future of the Community: A personal Perspective

Joseph Martinez, Architect Martinez + Cutri Corporation



The Future of the Community: A personal Perspective

Joseph Martinez, Architect Martinez + Cutri Corporation



The Future of the Community: A personal Perspective

Joseph Martinez, Architect Martinez + Cutri Corporation



The Future of the Community: A personal Perspective

Joseph Martinez, Architect Martinez + Cutri Corporation



The Future of the Community: A personal Perspective

Joseph Martinez, Architect Martinez + Cutri Corporation



The Future of the Community: A personal Perspective

Joseph Martinez, Architect Martinez + Cutri Corporation



The Future of the Community: A personal Perspective

Joseph Martinez, Architect Martinez + Cutri Corporation



The Future of the Community: A personal Perspective

Joseph Martinez, Architect Martinez + Cutri Corporation



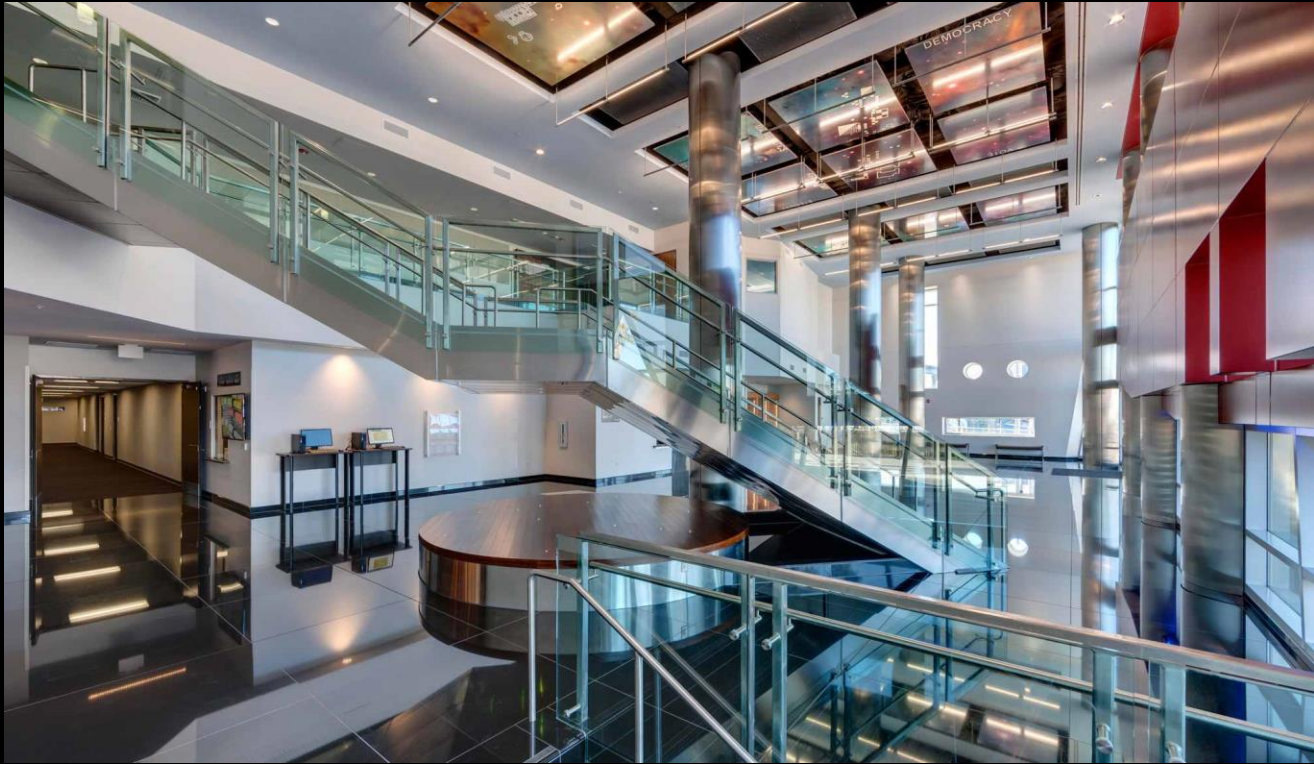
The Future of the Community: A personal Perspective

Joseph Martinez, Architect Martinez + Cutri Corporation



The Future of the Community: A personal Perspective

Joseph Martinez, Architect Martinez + Cutri Corporation



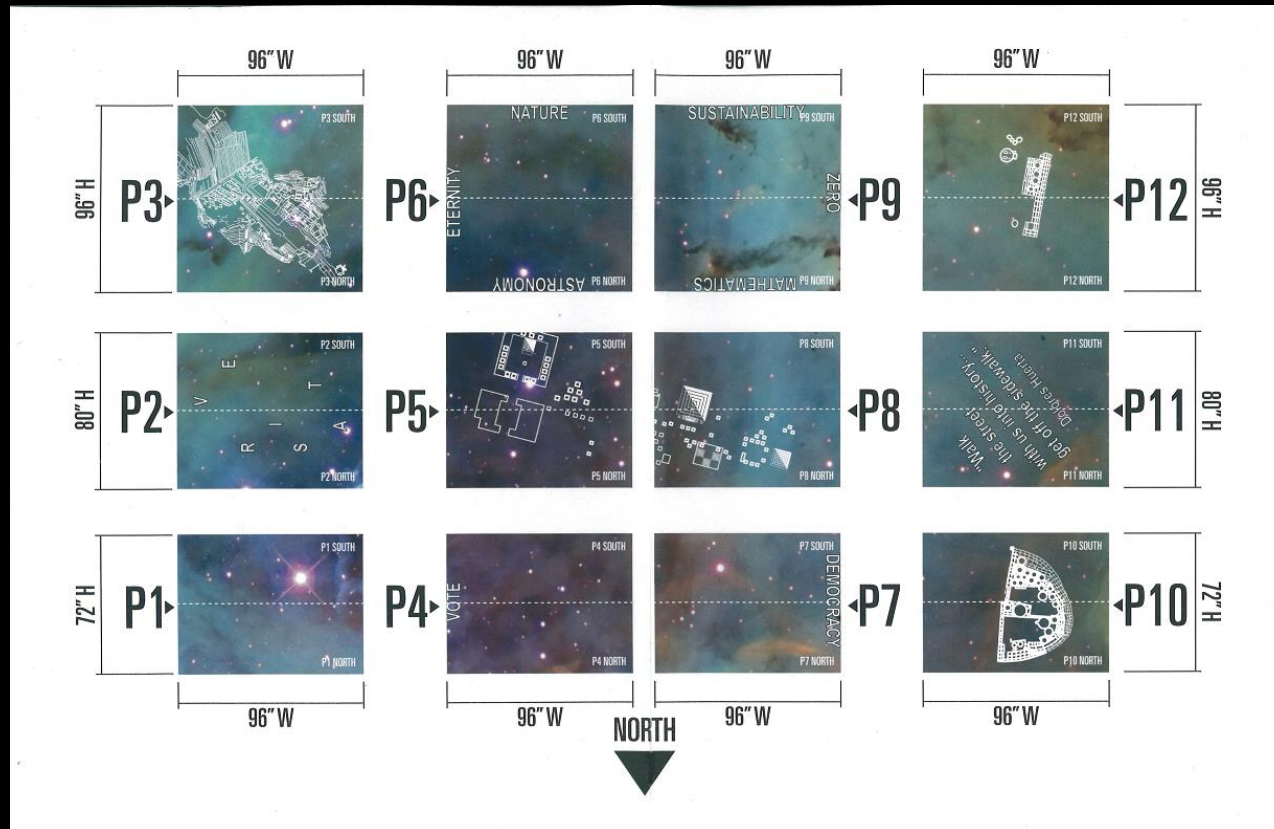
The Future of the Community: A personal Perspective

Joseph Martinez, Architect Martinez + Cutri Corporation



The Future of the Community: A personal Perspective

Joseph Martinez, Architect Martinez + Cutri Corporation



The Future of the Community: A personal Perspective

Joseph Martinez, Architect Martinez + Cutri Corporation

“Walk the street with us into history. Get off the Sidewalk!”

Dolores Huerta, Co-founder of UFW

The Future of the Community: A personal Perspective

Joseph Martinez, Architect Martinez + Cutri Corporation



The Future of the Community: A personal Perspective

Joseph Martinez, Architect Martinez + Cutri Corporation



The Future of the Community: A personal Perspective

Joseph Martinez, Architect Martinez + Cutri Corporation



The Future of the Community: A personal Perspective

Joseph Martinez, Architect Martinez + Cutri Corporation



The Future of the Community: A personal Perspective

Joseph Martinez, Architect Martinez + Cutri Corporation



The Future of the Community: A personal Perspective

Joseph Martinez, Architect Martinez + Cutri Corporation



The Future of the Community: A personal Perspective

Joseph Martinez, Architect Martinez + Cutri Corporation



The Future of the Community: A personal Perspective

Joseph Martinez, Architect Martinez + Cutri Corporation



The Future of the Community: A personal Perspective

Joseph Martinez, Architect Martinez + Cutri Corporation



The Future of the Community: A personal Perspective

Joseph Martinez, Architect Martinez + Cutri Corporation



The Future of the Community: A personal Perspective

Joseph Martinez, Architect Martinez + Cutri Corporation



The Future of the Community: A personal Perspective

Joseph Martinez, Architect Martinez + Cutri Corporation



The Future of the Community: A personal Perspective

Joseph Martinez, Architect Martinez + Cutri Corporation



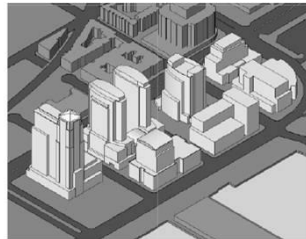
The Future of the Community: A personal Perspective

Joseph Martinez, Architect Martinez + Cutri Corporation



The Future of the Community: A personal Perspective

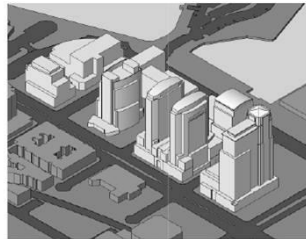
Joseph Martinez, Architect Martinez + Cutri Corporation



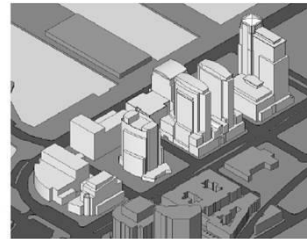
Massing Study: View to Southeast



Massing Study: View to Northeast



Massing Study: View to Southwest



Massing Study: View to Northwest

The Future of the Community: A personal Perspective

Joseph Martinez, Architect Martinez + Cutri Corporation



The Future of the Community: A personal Perspective

Joseph Martinez, Architect Martinez + Cutri Corporation



Manchester Pacific Gateway
Manchester Pacific Gateway, LLC

Jaw Design Co.
91.057.0000
Peter Runkberg, Design Director

Master Plan Submittal Blocks 2 and 3
Concept - Schematics Submittal

July 2, 2007 | Gensler | WSP | Page 17

The Future of the Community: A personal Perspective

Joseph Martinez, Architect Martinez + Cutri Corporation



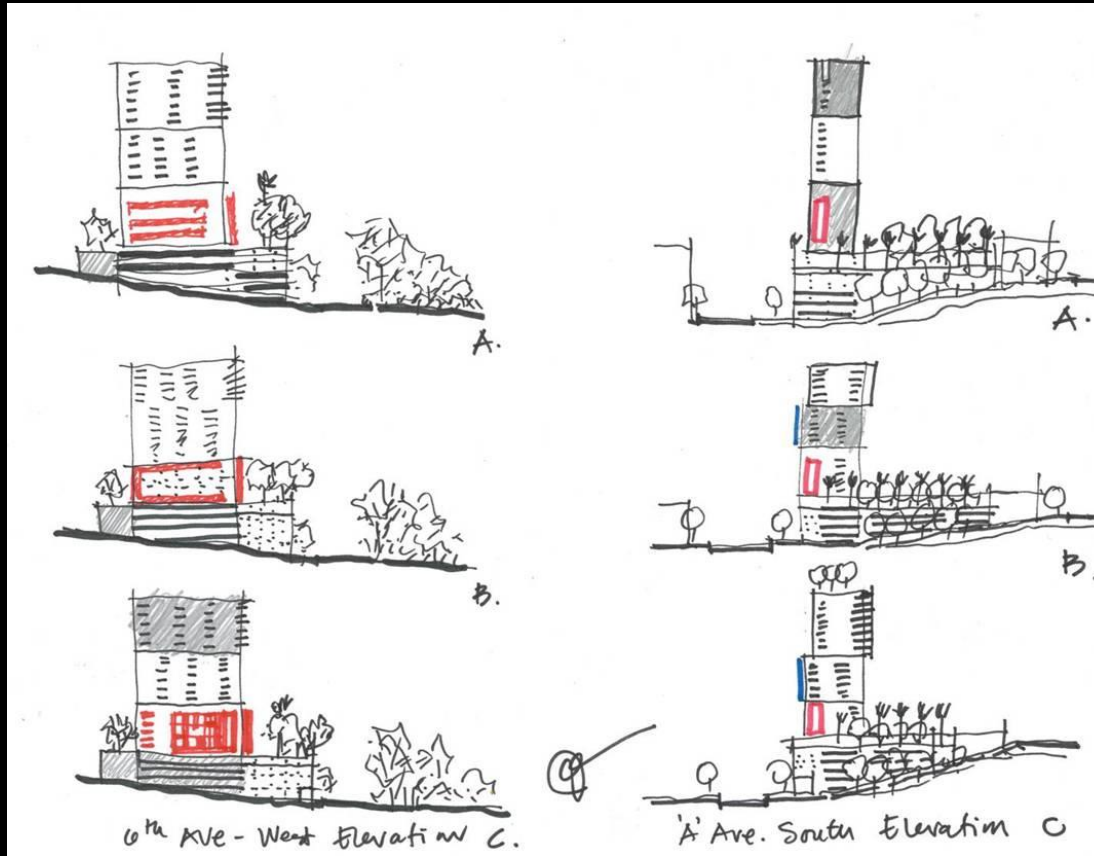
The Future of the Community: A personal Perspective

Joseph Martinez, Architect Martinez + Cutri Corporation



The Future of the Community: A personal Perspective

Joseph Martinez, Architect Martinez + Cutri Corporation



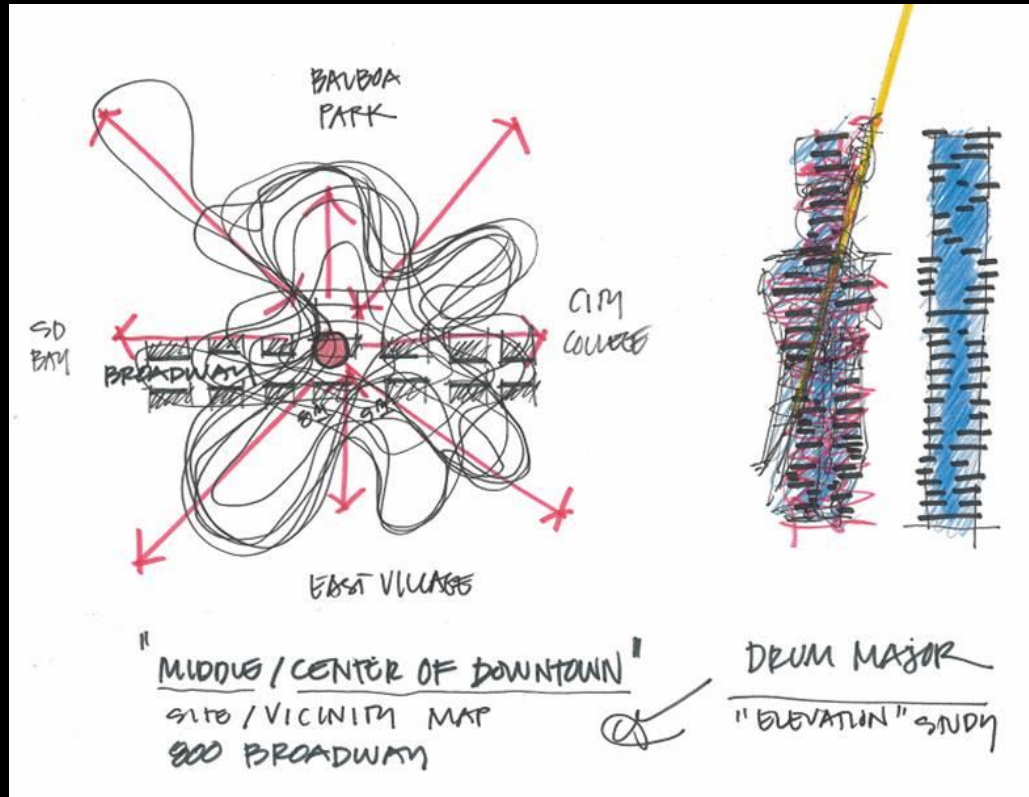
The Future of the Community: A personal Perspective

Joseph Martinez, Architect Martinez + Cutri Corporation



The Future of the Community: A personal Perspective

Joseph Martinez, Architect Martinez + Cutri Corporation



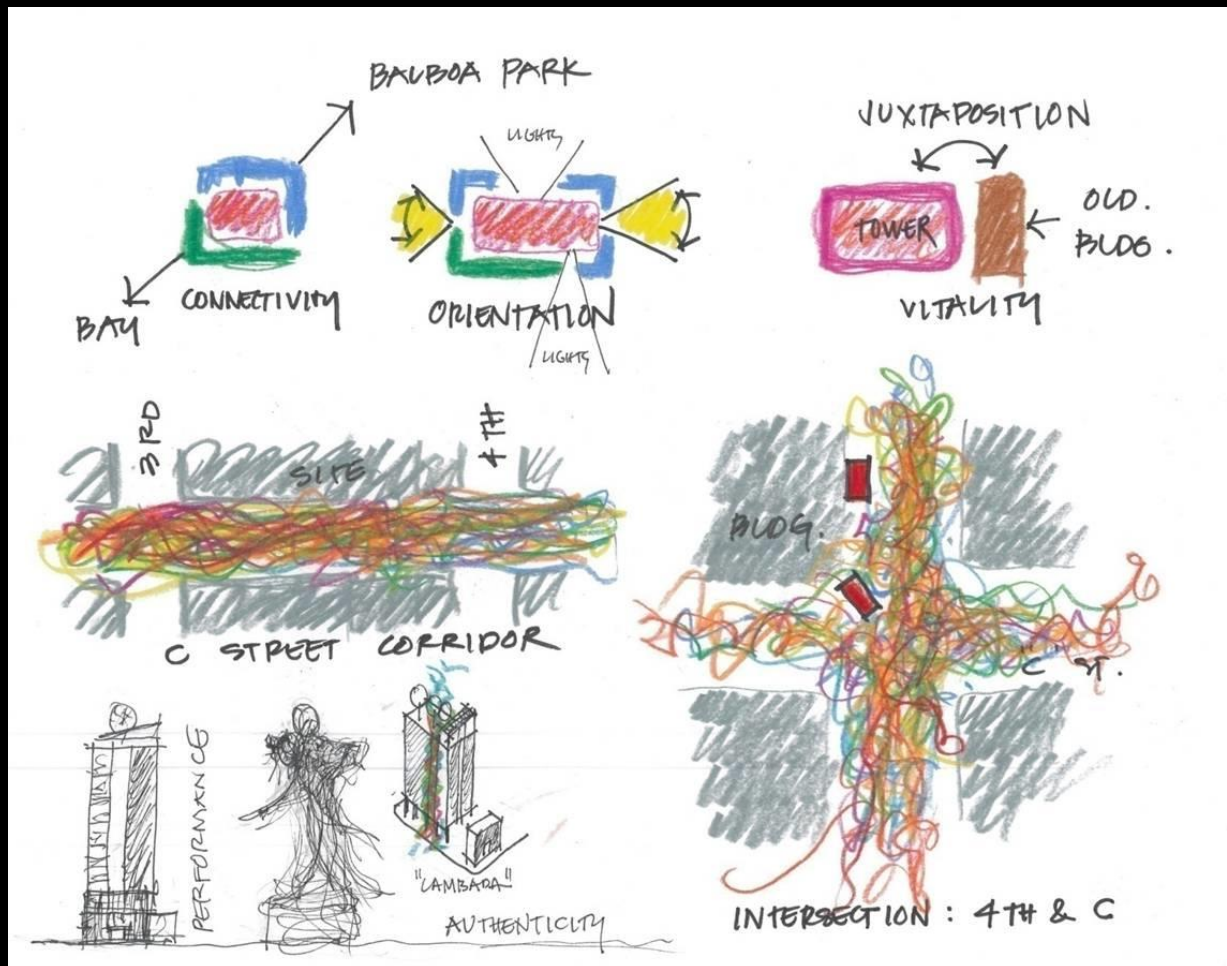
The Future of the Community: A personal Perspective

Joseph Martinez, Architect Martinez + Cutri Corporation



The Future of the Community: A personal Perspective

Joseph Martinez, Architect Martinez + Cutri Corporation



The Future of the Community: A personal Perspective

Joseph Martinez, Architect Martinez + Cutri Corporation



The Future of the Community: A personal Perspective

Joseph Martinez, Architect Martinez + Cutri Corporation



The Future of the Community: A personal Perspective

Joseph Martinez, Architect Martinez + Cutri Corporation



The Future of the Community: A personal Perspective

Joseph Martinez, Architect Martinez + Cutri Corporation



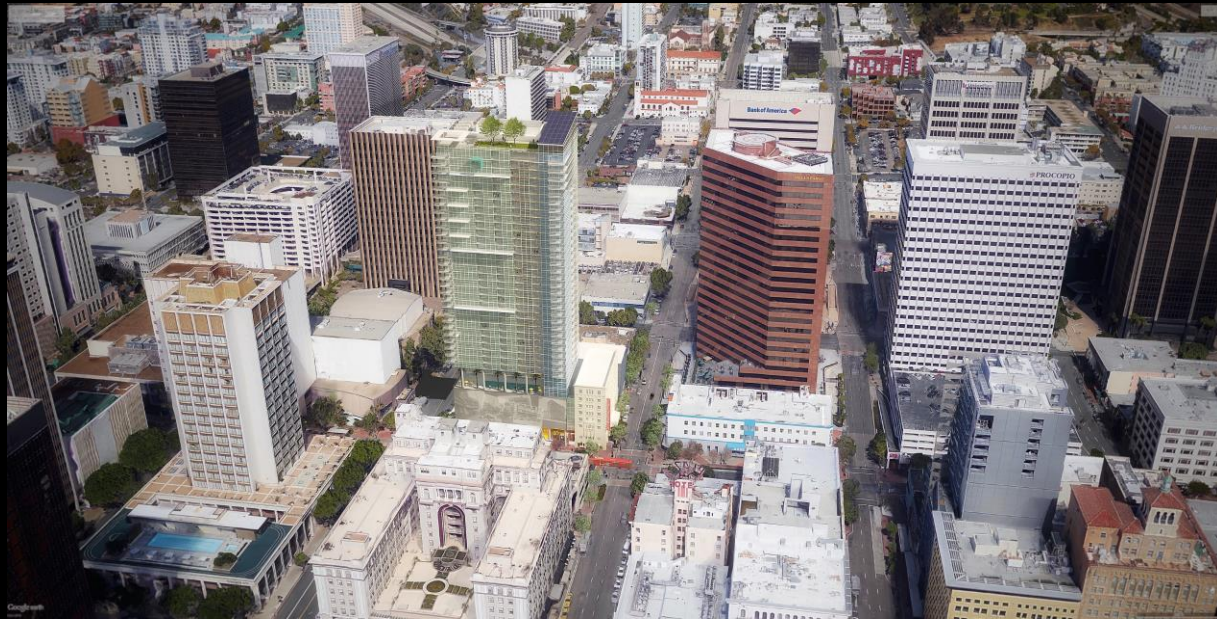
The Future of the Community: A personal Perspective

Joseph Martinez, Architect Martinez + Cutri Corporation



The Future of the Community: A personal Perspective

Joseph Martinez, Architect Martinez + Cutri Corporation



The Future of the Community: A personal Perspective

Joseph Martinez, Architect Martinez + Cutri Corporation

Over Arching Premise:

You are the Catalyst for Change !!!!



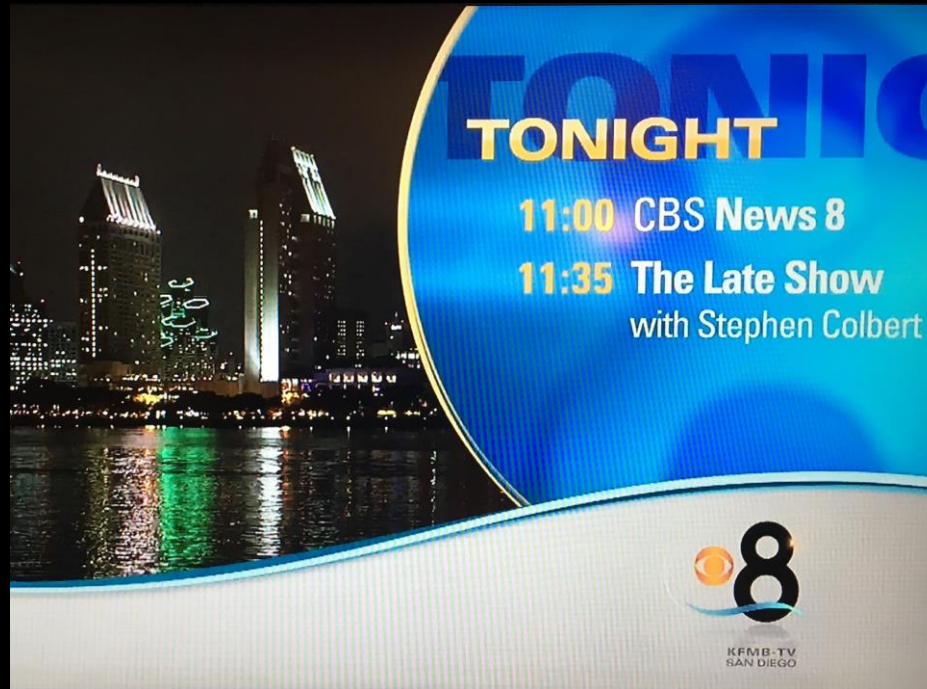
The Future of the Community: A personal Perspective

Joseph Martinez, Architect Martinez + Cutri Corporation



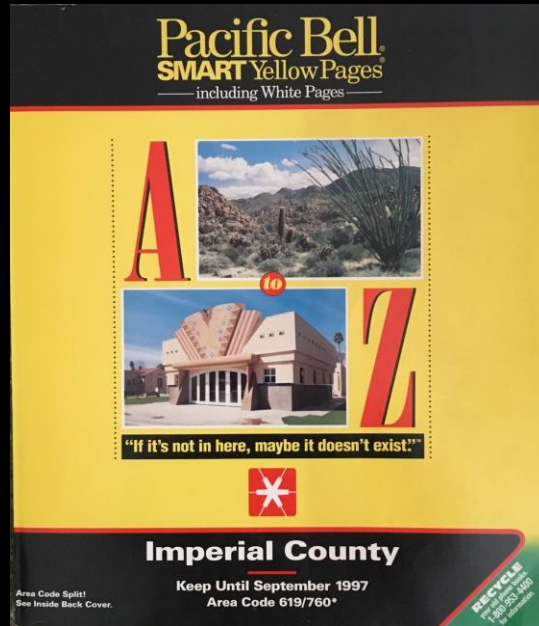
The Future of the Community: A personal Perspective

Joseph Martinez, Architect Martinez + Cutri Corporation



The Future of the Community: A personal Perspective

Joseph Martinez, Architect Martinez + Cutri Corporation



The Future of the Community: A personal Perspective

Joseph Martinez, Architect Martinez + Cutri Corporation



The Future of the Community: A personal Perspective

Joseph Martinez, Architect Martinez + Cutri Corporation

Over Arching Premise:

IN LAK'ECH

Tu Eres Mi otro Yo

You are my Other Me



The Future of the Community: A personal Perspective

Joseph Martinez, Architect Martinez + Cutri Corporation