



## **Martin Del Campo / Bob Esparza / Antonia Escobar Prizes**

March 18, 2014

**CASA**alumni

College of Environmental Design, UC Berkeley



Martin Del Campo . Bob Esparza

& Antonia Escobar Prizes

A c a d e m i c & C r e a t i v e E x c e l l e n c e

## Your Hosts

- Jennifer Wolch, Dean CED
- Ana Tenorio / Mathew Almendarez  
CASA Co-chairs CED
- CASAalumni
  - Roy Hernández
  - Oswaldo Lopez
  - Charles Higuera

UC  
**BERKELEY**  
ENVIRONMENTAL  
DESIGN

**CASA**alumni



**CASA**alumni

College of Environmental Design, UC Berkeley



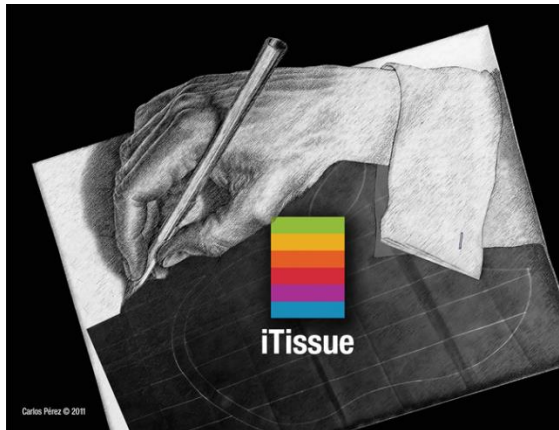
Martin Del Campo . Bob Esparza

& Antonia Escobar Prizes

A c a d e m i c & C r e a t i v e E x c e l l e n c e

## AGENDA

- **Guest Speaker: Carlos Perez**
- **Awards Ceremony**
- **Pictures / Interviews**
- **Food & Refreshments**



**CASA**alumni

College of Environmental Design, UC Berkeley

# Carlos Perez: Guest Speaker

## The Man Who Drew the Apple Logo



**CASA**alumni

College of Environmental Design, UC Berkeley



Martin Del Campo . Bob Esparza

& Antonia Escobar Prizes

A c a d e m i c & C r e a t i v e E x c e l l e n c e



**CASA**alumni

College of Environmental Design, UC Berkeley

# Prize Recipients



**CASA**alumni

College of Environmental Design, UC Berkeley





Martin Del Campo . Bob Esparza

& Antonia Escobar Prizes

A c a d e m i c & C r e a t i v e E x c e l l e n c e



**Ana Tenorio**

BA Landscape Architecture '14

**Merit Award**

\$300

**CASA**alumni

College of Environmental Design, UC Berkeley



Martin Del Campo . Bob Esparza

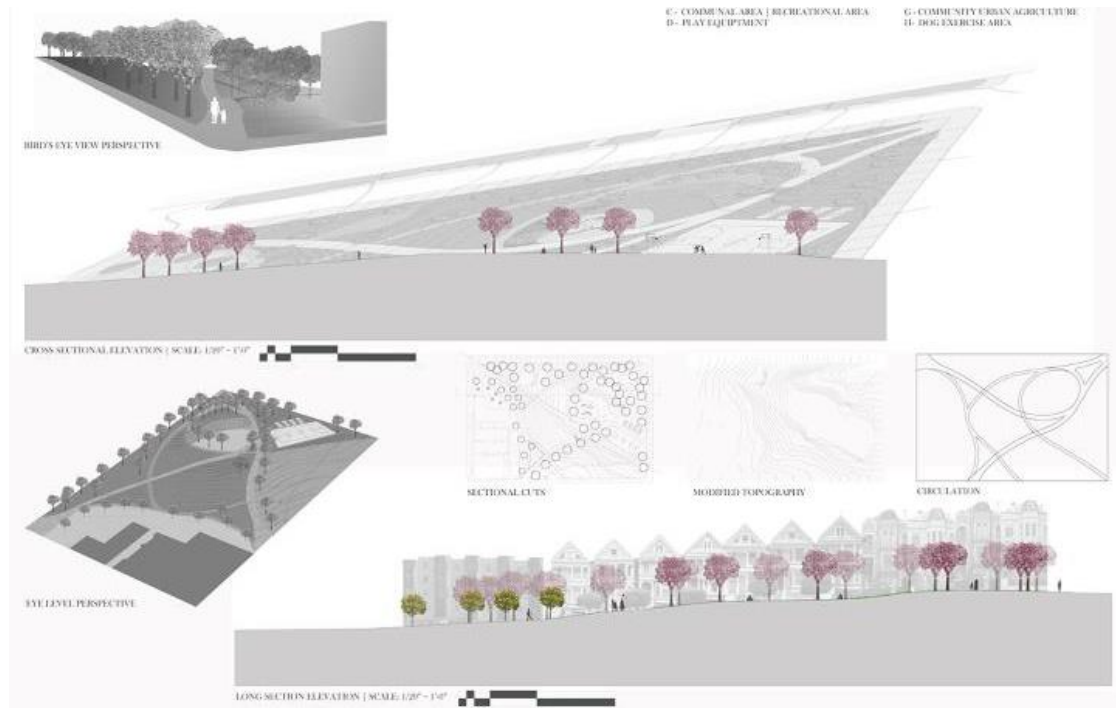
& Antonia Escobar Prizes

A c a d e m i c & C r e a t i v e E x c e l l e n c e

## Hickory Post-Freeway Park

### Landscape Architecture 102

The intention of this design was to provide spaces for recreation, spiritual retrieve and to commemorate the current uses of the site which at the time were agriculture and community education programs. The main paths were derived from the original circulation; additional paths were provided to allocate for pedestrians desired paths of travel.







Martin Del Campo . Bob Esparza

& Antonia Escobar Prizes

A c a d e m i c & C r e a t i v e E x c e l l e n c e



**Corina Velazco**

BA Landscape Architecture &  
Environmental Planning, 2014

**Antonia Escobar**

**Women in Design Prize**

\$500

**CASA**alumni

College of Environmental Design, UC Berkeley



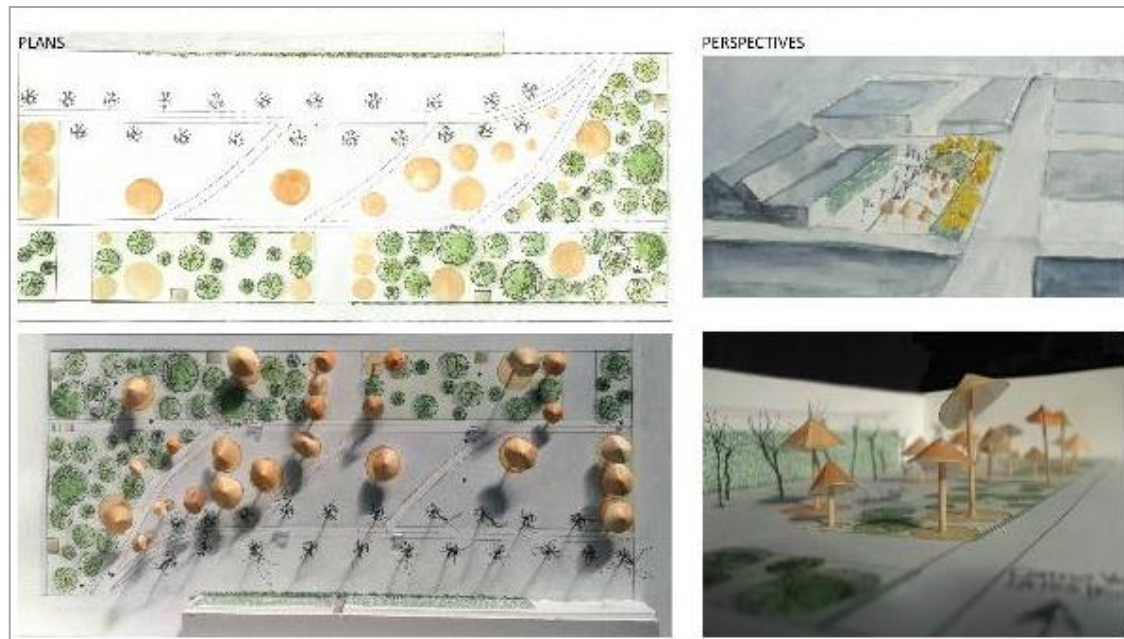
Martin Del Campo . Bob Esparza

& Antonia Escobar Prizes

A c a d e m i c & C r e a t i v e E x c e l l e n c e

## American Steel Studios Courtyard Landscape Arch 103

The courtyard at American Steel Studios features several vegetation types to reflect American Steel's make your own and steam punk culture. The studios, in West Oakland, CA, regularly display work in the courtyard by artists housed in the studios' warehouse. The courtyard is split into three areas, with three different vegetation types: wire trees framing a promenade, cor-ten steel cone trees and bioluminescent trees.





Martin Del Campo . Bob Esparza

& Antonia Escobar Prizes

A c a d e m i c & C r e a t i v e E x c e l l e n c e



**Diana Lizeth Nguyen**

BA Landscape Architecture '14

**Bob Esparza Prize**

\$1,000

**CASA**alumni

College of Environmental Design, UC Berkeley



Martin Del Campo . Bob Esparza

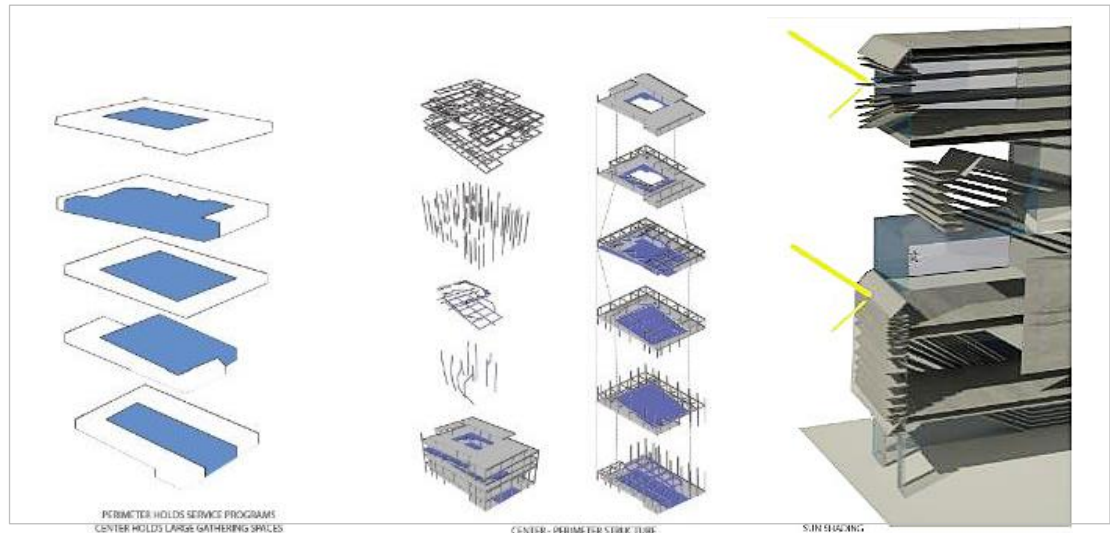
& Antonia Escobar Prizes

A c a d e m i c & C r e a t i v e E x c e l l e n c e

## Hickory Post-Freeway Park

### Landscape Architecture 102

The intention of this design was to provide spaces for recreation, spiritual retrieve and to commemorate the current uses of the site which at the time were agriculture and community education programs. The main paths were derived from the original circulation; additional paths were provided to allocate for pedestrians desired paths of travel.





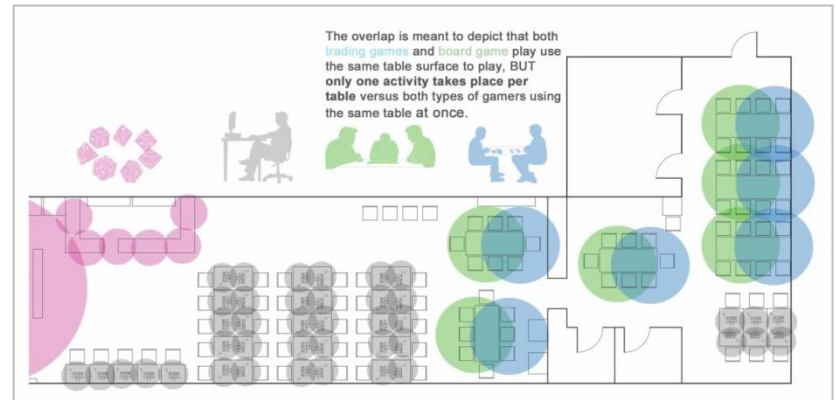
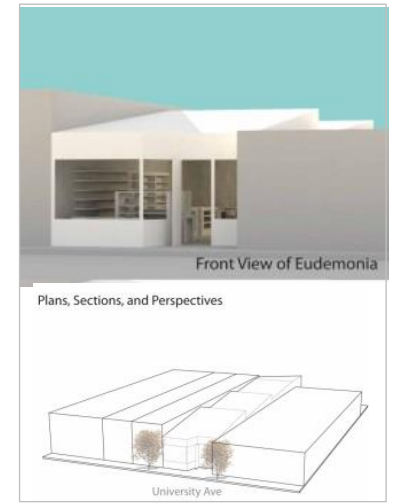
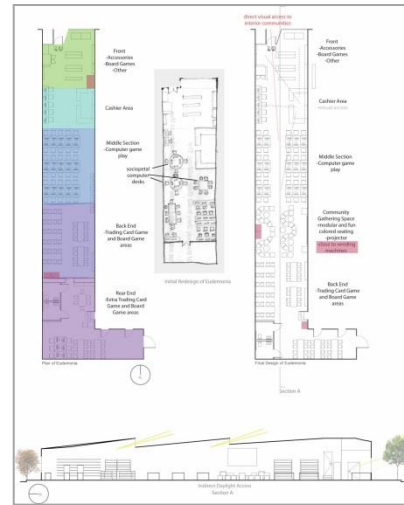
Martin Del Campo . Bob Esparza & Antonia Escobar Prizes

Academic & Creative Excellence

# Eudemonia Ethnography

## Arch 110AC Social / Cultural Factors in Design

Choose a site you are interested in learning more about. Practice all corresponding elements of an ethnographic study to understand the micro-culture of the space and people who most often occupy it in order to learn and evaluate whether the existing spatial design is appropriate. Propose a redesign of the space using the knowledge gained from observation, interviews, taxonomies, and historical research of the chosen micro-culture.







Martin Del Campo . Bob Esparza

& Antonia Escobar Prizes

A c a d e m i c & C r e a t i v e E x c e l l e n c e



**Jorge Andrade**  
BA Architecture '14

**Martin Del Campo Prize**  
\$1,000

**CASA**alumni

College of Environmental Design, UC Berkeley





Martin Del Campo . Bob Esparza

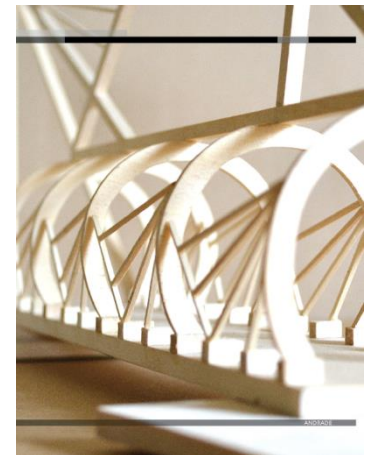
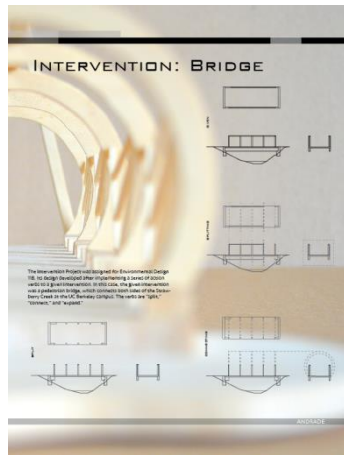
& Antonia Escobar Prizes

A c a d e m i c & C r e a t i v e E x c e l l e n c e

## Intervention Bridge

### Environmental Design 11B

Design the assigned intervention (a bridge) as a product of three verb operations. I choose the following verbs: “split,” “connect,” and “expand.” Each drawing shows how each verb transformed the given bridge into the final design.





Martin Del Campo . Bob Esparza

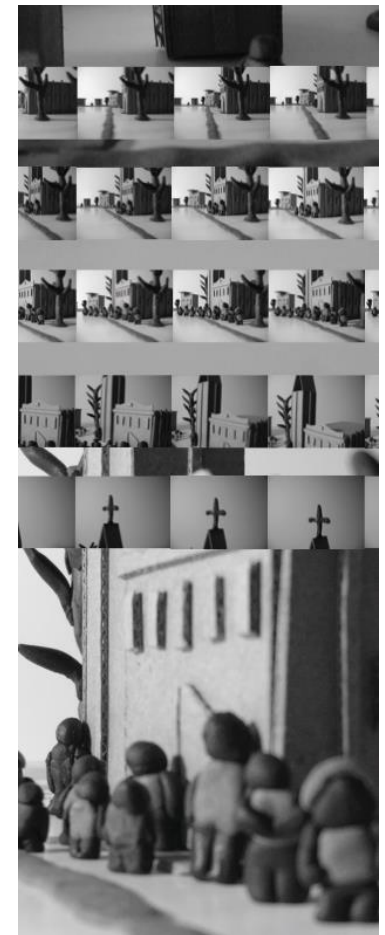
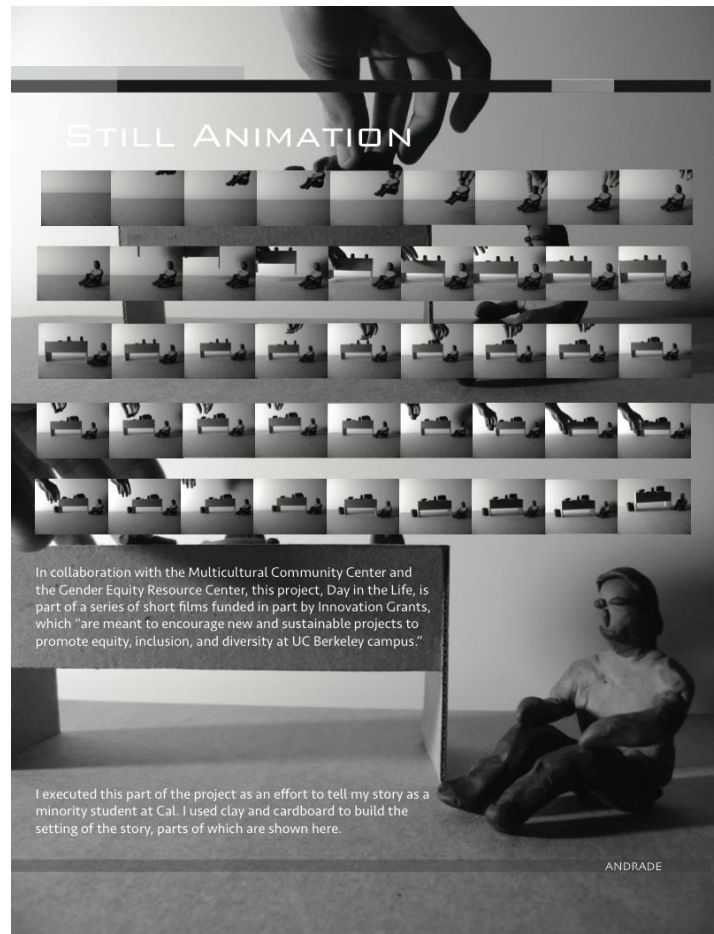
& Antonia Escobar Prizes

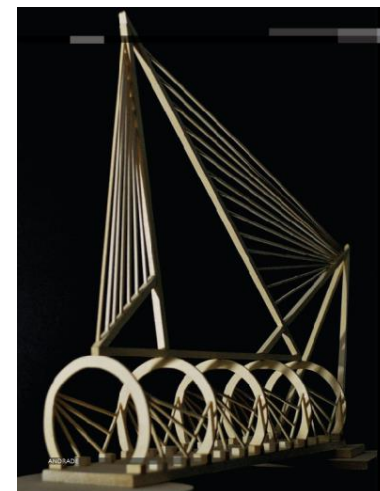
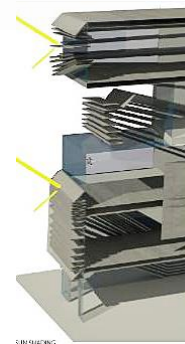
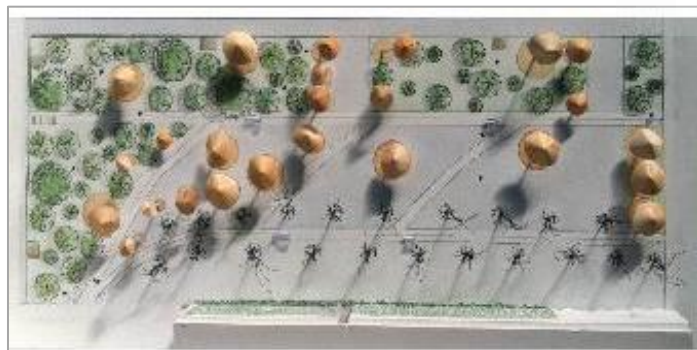
A c a d e m i c & C r e a t i v e E x c e l l e n c e

## Day in the Life

In collaboration with the Multicultural Community Center and GenEq

Create a film in which you demonstrate what a day in the life of a queer person of color looks like at Cal. I chose to make a Claymation in which I narrate how intersectionality plays a role in my life at Cal. I begin by placing the story parts together into a set, then let it develop into a story in which a boy comes out on the internet and struggles with his faith as a result. The film takes 3 minutes.





Thanks for supporting the Dream!

**CASA**alumni

College of Environmental Design, UC Berkeley



## **CASA**alumni

11400 W. Olympic Blvd. Suite 200

Los Angeles, CA 90064

[www.casa-ucberkeley.org](http://www.casa-ucberkeley.org)

### **Roy Hernandez**

[rhernandez@thirdwavecorp.com](mailto:rhernandez@thirdwavecorp.com)

310.804.7565

### **Oswaldo Lopez**

[oswaldo2lopez@gmail.com](mailto:oswaldo2lopez@gmail.com)

805.637.3770

### **Charles Higuera**

[Charles.Higuera@sfdpw.org](mailto:Charles.Higuera@sfdpw.org)

415.557.4646

## **CASA**alumni

College of Environmental Design, UC Berkeley